

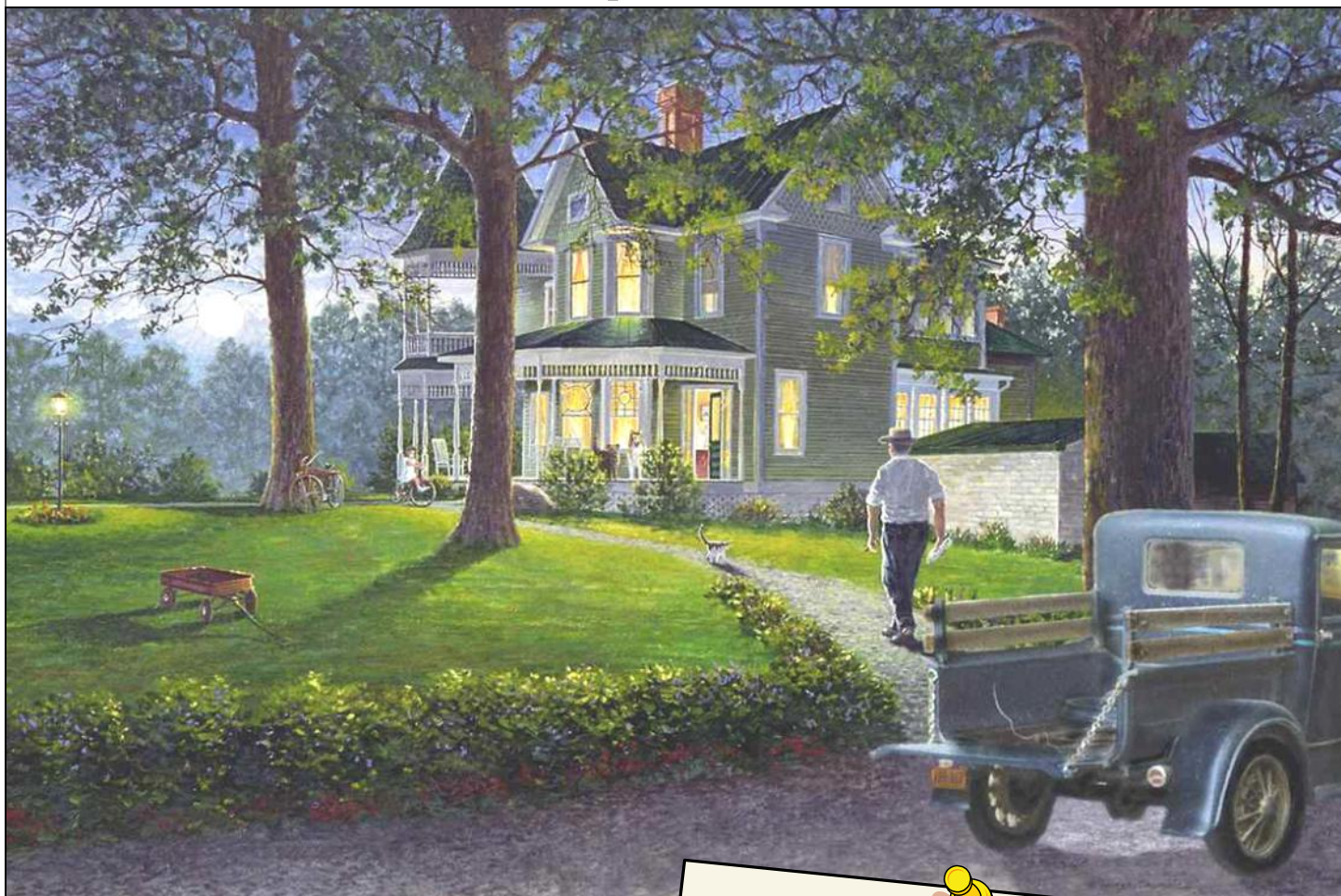


# Shade Tree A's Newsletter



Volume 37, No. 5 · Augusta, GA · May 2010

## "Papa's House"



Original Art by George Shumate · Prints Available ·  
[www.geoshumate.com](http://www.geoshumate.com)

George shares his  
"behind the scenes"  
memories of  
'Papa's House':

'My granddaddy built and lived in this house all of his adult life. He owned and ran a large country store in Ridgeway, VA — Geo O Jones and Son—that his daddy opened in the late eighteen hundreds. After my granddaddy retired from the store, my uncle managed it until he retired. The three of them kept the store open for a hundred years.

Every evening when granddaddy came home from the store it was usually getting dark and the dogs and cats were always there to welcome him. This particular day my first cousin was visiting and riding her tricycle around on the sidewalk.'



PRESIDENT	VICE PRESIDENT	SECRETARY	TREASURER
			
<b>Craig McMullin</b> 803-637-3790 mcmullinc@bellsouth.net	<b>Larry DuVall</b> 803-279-3524 gdoll1@comcast.net	<b>Theresa McMullin</b> 803-637-3790 tamcmullin@yahoo.com	<b>Richard Dunevent</b> 706-863-6758 richarddun01@comcast.net
<b>National Director</b>	<b>Ken Nelson</b>	803-957-2172 austin.nelson@att.net	
<b>Tour Director</b>	<b>Jim McPherson</b>	706-592-4835 James.mcpherson1@us.army.mil	
<b>Board of Directors</b>	<b>Bill Adams</b>	706-733-8364 gadams@aug.edu	
<b>Board of Directors</b>	<b>Curtis Krosting</b>	706-556-9507 chief@jodalefarm.com	
<b>Newsletter</b>	<b>Pat and Tom Roberts</b>	803-649-0054 shadetreeas@gmail.com	
<b>Newsletter Photographer</b>	<b>Sheila McPherson</b>	706-592-4835 smcpherson@mindspring.com	
<b>Shady A Ladies BOD Liaison</b>	<b>Frankie Dunevent</b>	706-863-6758 richarddun01@comcast.net	
<b>Era Fashions</b>	<b>Anne Neely-Beck</b>	478-945-3736 anbjeb@gmail.com	
<b>Webmaster</b>	<b>Dan Perla</b>	706-855-5730 perlad@earthlink.net	
<b>Web Page</b>	www.shadetreeas.org		
<b>Postal Address</b>	Shade Tree A's Model A Club 4424 Reynolds Street Hepzibah, GA 30815-7909		



### MAY MEETING

The Shade Tree A's will meet on **Monday, May 10** in Richard Dunevent's garage at 7 pm

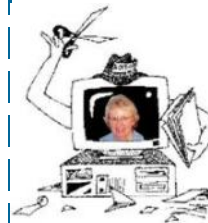
The program: With summer rapidly approaching along with hot weather and parades (with slow speeds and lots of stop-and-go driving), it's time for us to address that pesky problem of **vapor lock**. Be prepared with **your** method of diagnosing vapor lock, as well as **your** method of eliminating this problem. Let's see how many club members participate!

Propose some topics for any problems you'd like to see addressed in the future. This is **your** car club—let's make it the best it can be!

### Table of Contents

Officers/Announcements .....	2
President's Column/BOD Minutes .....	3
Meeting Minutes/Tech Tip .....	4
Pictures/Mileage Programs .....	5
Along the Way .....	6
May Events—and more! .....	6-7
Then and Now .....	8
Vintage Visions .....	9
Gear UP for Touring (Tech Corner) .....	10
Our Sponsors .....	11
Calendars/Refreshments/B-days .....	12

### OUR COVER:



George Shumate, our artist friend from Roanoke, VA, has shared still another of his memories with us. We are really pleased—thanks, George!

About 50% of our members who have email have agreed to receive their newsletters by email—what a saving of time and money! If you'd like to add your name to the growing list, just let me know.

This month: Buttons, touring, parrots, health screenings, plus good old oil and grease! Read on!  
...Pat

*The Shade Tree A's is a non-profit organization with chapter affiliations with MAFCA and MARC*

The organization is dedicated to the preservation and the restoration of the Model A Ford automobile and supports membership in these national organizations dedicated to the same purpose.

Shade Tree A's membership includes annual dues (\$40) for the Model A Ford Club of America (MAFCA) and a subscription to **The Restorer** Magazine from MAFCA, 250 South Cypress St., LaHabra, CA 90631



Members are also urged to join the Model "A" Restorers Club (MARC). Dues are \$38 yearly and include a Subscription to the **Model "A" News**.



The Shade Tree A's serve the CSRA (Central Savannah River Area) in Georgia and South Carolina



## Off The Running Board

Thoughts from our President...

Just want to remind everyone to take note of our event calendar especially over the next couple of months before it gets too hot. Our Tour Director, Jim McPherson is off to another fantastic start this year in keeping us busy on and off the road. There is a little bit of everything going on that should hopefully perk your interest. Between swap meets, parades, technical sessions, picnics, car displays and tours surely there is something for everyone, all taking place over the next 60 days. If you need any additional information concerning the details on any of these events, don't hesitate to give Jim a call.

We have two very patriotic parade events coming up shortly that are very well attended by hundreds of spectators (maybe a few thousand) and local television: the Memorial Day Parade in Aiken (May 29) and the Gilbert Peach Festival and Parade (July 3<sup>rd</sup>) in Gilbert, both on the South Carolina side of the river. These two events for whatever reason have had only limited participation by our club over the past several years. I'm sure our strong participation this year would be very special and much appreciated by the event organizers and spectators at these two upcoming events. If you're in town over the holidays, please give it some thought.

Have a safe trip,  
*Craig*

### BONES OF AN ORGANIZATION

The body of every organization has four kinds of bones. Which kind are **YOU**?



1. The **WISHBONES** who spend all their time wishing that someone else would do the job.
2. The **JAWBONES** who do all the talking but very little else.
3. The **KNUCKLEBONES** who knock everything that everybody else tries to do.
4. The **BACKBONES** get under the load and do the job.

*Shared by the Steering Column/Ferd Driver/  
The Greater Baltimore Model A Ford Club, April 2010*

## Minutes: March BOD April Membership



### Board of Directors' Meeting—March 22, 2010

The Shade Tree As Board of Directors met on March 22, 2010, at member Richard Dunevent's garage at 7:00 p.m.

The Newsletter Staff reported that approximately 40% of the membership is receiving the Newsletter by email. It was also pointed out that getting the Newsletter by email allows the staff to add any last minute information that they would otherwise not be able to add to the printed copies.

The National Director had nothing new to report, but did remind us that he has to have monthly mileage before the end-of-the-month in order to get it to MAFCA.

Our Vice President talked about upcoming technical programs and seminars. Members have a lot to look forward to during this year. The next Technical Seminar will be on April 24<sup>th</sup> and the choice of hands-on-activities will be many!

The Tour Director discussed plans for upcoming tours:

- The Orchid Tour March 27<sup>th</sup>
- The Parrot Tour May 1<sup>st</sup> A motion was made and passed for the club to buy chicken for the picnic following the tour.
- The Social Security Run May 13<sup>th</sup> – 16<sup>th</sup> Sheila McPherson reported that the Headknocker has asked the Shade Tree As to once again help in providing the entertainment for the Saturday night banquet. A motion was made and passed to participate and buy the CD required.
- The June 5<sup>th</sup> Doctor's Hospital Men's Health Fair
- The Peach Festival and Pool Party at the McMullins June 19<sup>th</sup> A motion was made and passed to purchase the meat for the picnic by the pool.
- The manifold cooking picnic and the poker run are still on the list of possible activities for 2010
- The May 29<sup>th</sup> Technical Seminar's breakfast will be at the Piccadilly on Washington Road \* *Date/ breakfast location later change—details on page 7*

The next Board meeting is scheduled for May 17, 2010.

The meeting was adjourned.

Respectfully submitted,  
*Theresa McMullin*, Secretary

Meeting minutes ➡



## April 2010 Meeting Minutes

The April Monthly Meeting of the STAs was held April 12, 2010, at member Richard Dunevent's garage at 7:00 p.m. President Craig McMullin was unable to attend, so Vice President Larry DuVall called the meeting to order. There was one visitor present – Billy Hughes of North Augusta. There were 38 members present. April birthdays were recognized. The March Meeting Minutes were approved and Treasurer, Richard Dunevent gave the club's financial report.

Illnesses reported were Craig McMullin and Bill Adams. Craig is under-the-weather. Larry asked that everyone keep Bill, Gayle, and their family in your thoughts and prayers as they work through this treatment.

National Director, Ken Nelson thanked those who turned in mileage for March and presented mileage awards to Jim Mason, George Gordon and Richard Dunevent – all reached 2,000 so far. Ken again urged folks to check out the MARC website. There are a lot of pictures from Charlottesville, and the Index 1-7 previously discussed is now in the library. Ken is also a member of MAIFI and informed the members of MAIFI's useful site for ordering parts and the museum plans. There is also a raffle available through MAIFI – someone will win a Model A – tickets: 1 for \$10, 3 for \$25, and 9 for \$50.

There was no report from the Newsletter staff.

There were no Show and Tell items.

Tour Director Jim McPherson discussed old business consisting of the most recent activities of the STAs:

- Richmond Hill – Curtis Krosting informed everyone that it was a great tour and Larry DuVall thanked those involved in organizing a smoothly run weekend tour.
- Ernie Dinkins and Larry Komp remarked on the St. Patrick's Day parade – Hugh crowd downtown – largest crowd ever for a parade. The club had a good showing of cars.
- The Palmetto A's Picnic in the Park – The club had 12 Model As at the picnic – it was a fun time. The Palmetto A's once again treated us to some unique car games.
- The Orchid and Opera Tour was a success. Jim thanked Ken Nelson for helping to plan this tour.
- Several members attended the Charlotte Auto Fair – the turnout of both vendors and people was a little lower this year.

Under new business, upcoming events were discussed by Jim McPherson. Please see details covered in this newsletter.

Vice President Larry DuVall introduced the technical program: Part 2 of "No More Panic Attacks" presented by Larry Komp. Members gathered around a Model A truck for hands-on learning.

With no further business, the meeting was adjourned and the members enjoyed refreshments & fellowship.

Respectfully submitted,  
*Theresa McMullin*, Secretary



### Tech Tip of the Month

.... Jim McPherson

May 2009: Tech Tips are not always easy to come up with, but they are when you can steal one from someone else (*in this case, Richard Dunevent!*) Everyone knows the steering box, transmission and differential contain 600W oil. Over the years the oil plug (right) has frequently been replaced by a grease fitting (below) on the steering box. This is definitely not good for the steering box components. They were designed to be bathed in oil. Grease provides essentially no lubrication. First, most people do not add enough grease to fill the steering box. Secondly, any grease on



the worm, sector or bearings is wiped off when you turn the steering wheel, never to return. Grease does not flow like oil, so once moved (or wiped off) by the steering action the now bare parts are not recoated with a lubricant. The result is hard steering and rapid wear. Such was the case with Larry DuVall's 1931 Model A Coupe at a recent Tech Session. Richard and Larry corrected the situation by removing the light switch assembly from the bottom of the steering box and the grease fitting, then removing the grease with brake cleaner. Spraying the brake cleaner into the steering box dissolved and washed the grease out the bottom of the steering box. After allowing time to dry, the parts were reassembled and the steering box filled with 600W oil. Now Larry is turning doughnuts in the Kroger parking lot!

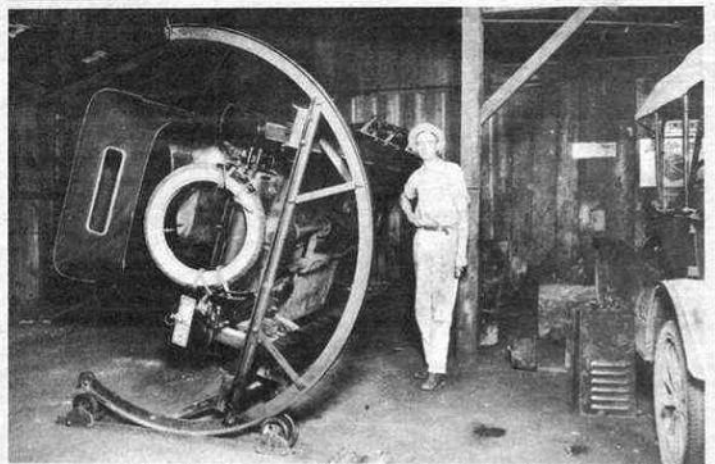
**DEDICATED MECHANIC**



*'I never did see the rest of this man on the whole trip!'*

The article below is reprinted with permission from HarborLight, the newsletter of the Harbor Area MARC/MAFCA in Torrance CA.

**MEMORIES:**



**1923**

Automobile repair shops were much different 60 years ago than they are today. Early methods of operation seem strange when compared with those at many of today's facilities which provide mechanics with a wide variety of tools and testing devices for servicing cars and trucks. Notice the unusual "lift" above which turned an auto on its side for easier access by mechanics. This device was in the shop of machinist Erwin G. Moergen in O'Fallon, Ill. The photograph of this scene was submitted by Moergen's stepdaughter, Mrs. Francis G. Poletti, of Troy, Ill.



**MARC Mileage Program**

*Ken Nelson – Mileage Chairman*

**CONGRATULATIONS**

**TO THE FOLLOWING MEMBERS WHO HAVE ACHIEVED THE 2000 MILE LEVEL**

**Bill Adams (Coupe)**

**James & Anne Beck (Coupe)**

**Donald Cerefin (Coupe)**

**Richard Dunevent (Tudor)**

**George Gordon (Pickup)**

**Jim Mason (Fordor)**

Those members in attendance at the April meeting were given their plaques.

**THANK YOU** to all the members that are participating in the program.

**MAFCA MILLION MILE PROGRAM**



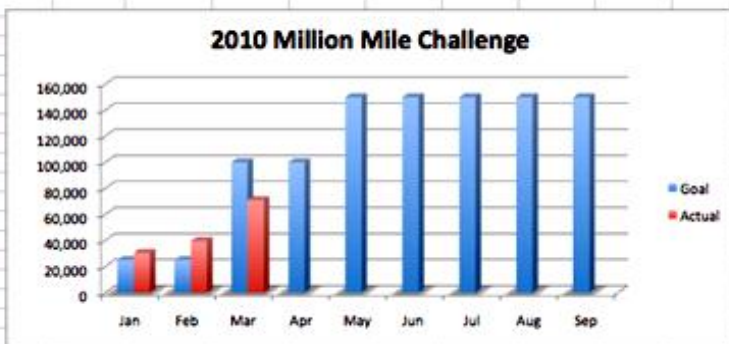
**Ken Nelson – Mileage Chairman**

I'd like to thank all of you who have taken the time to send me your odometer reading via e-mail. I'll be contacting you again later this month for your April reading. I need to submit the numbers prior to May 1 so your promptness will be appreciated.

**We had 15 members send me their odometer readings for March and, as a club, we had 4,632 miles for the month.**

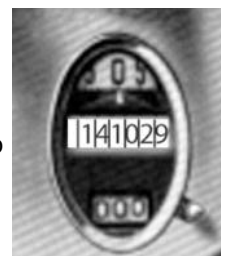
The national total as of April 12, which represents 347 cars, is shown on the left, below.

	Jan	Feb	Mar	Apr	May	Jun	Jul	Aug	Sep	Totals
Goal	25,000	25,000	100,000	100,000	150,000	150,000	150,000	150,000	150,000	1,000,000
Actual	30,499	39,609	70,921							141,029
Cars	249	325	347							



As of 4/12/10

The "YTD target" as of March was 150,000 miles and we drove 141,029, so we need to do better in April.



**Please consider joining the program and send me your odometer readings when I send the next e-mail request.**

Now is the time to "Join the 'Program'" and start ENJOYING your Model A. It's never too late to start!!!

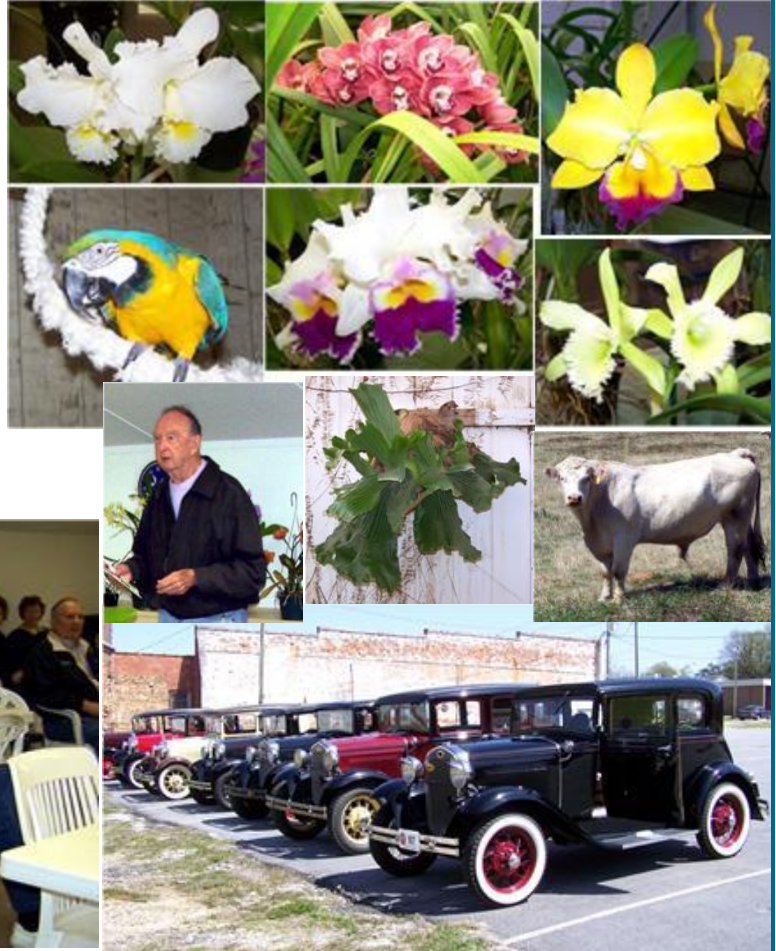




## ALONG THE WAY...

### The Orchid Tour

March 27<sup>th</sup> dawned a beautiful Saturday morning, and found the Shade Tree A's eating breakfast at the Sunrise Grill in North Augusta, SC. Following breakfast we toured to Newberry, SC to Carter and Holmes Orchids. Mr Holmes gave an interesting overview of orchids and how to care for them, then turned us loose in their sixteen greenhouses. Needless to say, several purchases were made! We ate lunch at The Grill on Main before returning home. We had nine Model A's on this tour and nineteen people, including Ralph and Madge Roub and Calvin LeNeve from the Old 96 District A's. What a colorful day!



## May Events--and more!

### PARROT PICNIC Saturday, May 1, 2010

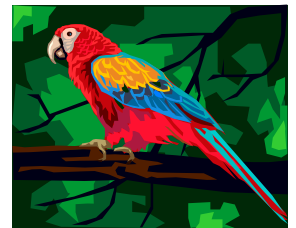


On **Saturday May 1<sup>st</sup>**, we'll tour to Harlem to see Feathered Friends Forever Rescue and Sanctuary and have a picnic lunch. We'll leave from Richard Dunevent's at 10:45. This parrot shelter has 15 varieties and over 200 parrots and consumes over 1,800 pounds of feed a month. They are America's largest 501c non-profit parrot shelter and operate on tax-deductible donations.

The Club will provide some tasty fried fowl, plates, cups, eating utensils and napkins. You bring a **LARGE** dish (or **TWO**) to share with the group and drinks for your family.

Bring your camera and wear comfortable shoes, not flip flops or open shoes as ant hills prevail. This would be a great outing for the grandkids.

If you did not sign up at the meeting, please call or e-mail Jim McPherson so we will have an accurate count on the number going.



(more events, page 7)

## SOCIAL SECURITY RUN

May 13-16, 2010  
Madison, GA



Registration forms are available for the **May 13-16** Social Security Run in Madison, GA.

We will visit several places of interest during these tours, including the Micro-Car Museum, the George Bugg Museum and the longest covered bridge in GA.

Early-bird activities are planned for Thursday and the Driver's Introduction Ceremony Thursday night. The Medicare Tour is Friday and a Western Hoe-Down Welcome Party is Friday night at the pool. Saturday is the BIG Social Security Run with prizes awarded at the banquet. We suggest you stay in the Hampton Inn. We will depart Thursday morning (May 13) at 9:30 from the Sunrise Grill on Washington Road. Come early and join us for breakfast. Contact Jim McPherson if you need a registration form.

## MEMORIAL DAY PARADE

Aiken, SC  
May 29, 2010



On **Saturday, May 29<sup>th</sup>**, we'll gather at Al's Restaurant on Atomic Road in North Augusta, leaving there promptly at 8:30 am. We'll travel to Auten's in Aiken for breakfast at 9. (Directions are below)

After breakfast, we'll have time to browse downtown Aiken antique and specialty shops until the parade lineup at 12:30 p.m. This well-attended and moving parade, sponsored by the Marine Corps League, will begin promptly at 1 pm. Following the parade we'll tour to Carolina BBQ in New Ellenton for a late lunch. Feel free to join us anytime throughout the day. We'll learn of our parade lineup number approximately two weeks before the parade, and we'll email you the details.



Directions to Auten's, 969 Pine Log Road in Aiken, which serves a Country Breakfast until 10am. Go towards Aiken on Hwy 1, and turn R at the Bypass (SC 118/S Carolina 19 Truck/Hitchcock Pky). Continue to follow this road 5.1 miles—it becomes Pine Log Road. Auten's will be on your right. It's in the Staples shopping center and is located right behind Kentucky Fried Chicken. See their menu at [autensofaiken.com](http://autensofaiken.com).

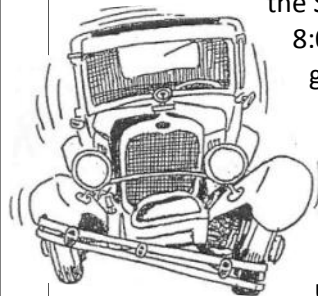
## TECH SESSION 25

May 22, 2010  
*(note date change)*



From VP Larry DuVall: In order to accommodate those club members who have committed to the Memorial Day parade in Aiken, *(see bottom left box, this page)* we have changed the date for Tech Session 25.

We will meet for breakfast on **Saturday May 22<sup>nd</sup>** at the Sunrise Grill on Washington Rd. at 8:00 am, and proceed to Richard's garage at 9:00 am.



Bring us your sick and shut in Model A's and we'll see if we can put them on steroids for the summer season. So far I'm unaware of any problems we need to address so this is the time for you to get that nagging little problem addressed.

## DOCTORS HOSPITAL EVENT

"Gentlemen, Start Your Engines"  
Augusta, GA  
June 5, 2010

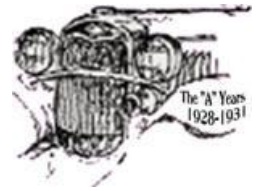


The "Living Well" partners--Doctor's Hospital, The Augusta Chronicle, WAFJ and WJBG-TV—are sponsoring the second annual men's health expo and car show, "Gentlemen, Start Your Engines". The 2010 event will be **Saturday, June 5** from 10 am to 2 pm at Warren Baptist Church (3203 Washington Road near Fury's Ferry) and will include a variety of free health screenings for men. *(fasting is required for some tests)*

The car show, very well-received last year, will again be held, and the STA's will be there! First, second and third place prizes will be awarded in categories for People's Choice, Kid's choice and Engine Starters' choice. Planning to attend? Be sure to put your name on the sign-up sheet at May's meeting—and fill out a registration form.



# Then and Now...



Below, page 86 from the Western Auto 1930-1931 catalog (cover, left).

We've done a couple things:

- Adjusted the '30-'31 catalog price to 2009 prices using the CPI (Consumer Price Index)
- Looked at current catalogs to see if we could find the same or an equivalent item—then added its price.

*It wasn't that prices were high during the Depression. Many people simply had no money to buy even the most inexpensive items.*

*In 1931, at the A&P Stores, 8 O'Clock Coffee was 19 cents a pound, lebanon bologna was 17 cents and so was hamburger and longhorn cheese.*

86

## ADD EFFICIENCY, BEAUTY AND ECONOMY TO MODEL "A" FORDS

### Chromium Hub Flanges and Wheel Rings

Beautiful Your Ford. Make It "Show Up!"

**HUB FLANGES**  
All cars except Ford have wheels with large chromium caps that cover the hub completely hiding the wheel nuts. These new chromium flanges give the same appearance to the model A Ford.

**C5741A**—Hub Flange, 1930 type, a solid plate that covers the old cap, each . . . . .**.65**  
Set of 5 . . . . .**2.95**

**C5737**—Hub Flange, 1928-29 type, goes around the regular hub cap, each . . . . .**.85**  
Set of 5 . . . . .**2.95**

**WHEEL RINGS**  
Many late model wire wheels have a removable chromium flange around the outer rim. We now have a ring that gives this same feature to the Ford. Give the car the appearance of being lower, make the wheels look smaller. Do not need to be removed when changing wheels or tires. For 1930 only.

**B5508**—Wheel Rings, each . . . . .**1.25**  
Set of 5 . . . . .**5.45**

### Accelerator Foot Rest

**68¢**

A hinged type, accelerator foot rest, for drivers with small feet or short reach. Helps to maintain an even flow of Gas. No drilling or cutting the carpet. Fastens under the foot rest that comes on the car. Nickel with black inlay.

**D5943**—Hinged accelerator pedal for '28-30 Fords. . . . .**.68**

### Roadster Top Boot

2009: \$46.00  
2010 Catalog: Vinyl: \$169.00  
Canvas: \$209.00

### Hub Caps for Ford "A"

**C5732**—A beautiful cone shaped Chromium cap the same size as the 1930 Ford cap. Used to make 1928-29 cars look up to date. Each . . . . .**1.35**  
Set of 5 . . . . .**6.75**

**A5169**—Regular replacement cap for 1926-29 Ford, wire wheels, nickel, each . . . . .**.12**

**A5167**—Regular replacement cap for 1930 Ford wire wheels, Chromium, each . . . . .**.18**

Almost exactly like regular Ford equipment. Our big buying power and direct distribution save you about 25%.

**F6752**—Top Boot for 1928-1930 Ford Roadsters complete. . . . .**3.65**

### Quail Cap

A beautiful cap, designed for the Model A Ford. Cannot be stolen, locking key with each cap. A slight turn of the cap permits tilting for quick, easy filling. Finished in highly polished nickel. Fits 1928-29 only.

**C5847**—Quail Cap. . . . .**1.98**

### Electric Wiper

A well made wiper designed to replace worn out electric wipers, or vacuum wipers which do operate steadily. Made for the Ford, easy to install. An exact replacement for Ford Electric, and can be used in place of the vacuum type with only slight changes. Includes switch, inside control for blade, and good quality rubber swipe. For closed models only.

**A5099**—Ford A Electric Wiper. . . . .**2.25**

### Air Cleaner

Keeps dust, bugs, etc., from clogging up the carburetor and getting into the motor and causing excessive wear. No moving parts, nothing to get out of order, and easily cleanable.

**A5163**—Air Cleaner for Model A Fords. . . . .**.95**

### Pedal Pads

Rubber pedal pads are more comfortable to your feet, do not carry engine vibration, or heat. Won't let your feet slip off the pedals. Stamped steel frames, clamp on firmly. Black rubber insets.

**D5958A**—Pedal Pads, 1928-30 Ford, pair . . . . .**.30**

### Lubricating Spring Covers

The shock absorbers on Model A Fords make it possible to enjoy the comfort and luxury of well greased springs without excessive pitching. Prevent spring "squeaks" and broken springs. Enables you to keep the springs well greased all the time and without exorbitant cost or constant attention. Consists of four stout leatherette casings, shaped to fit the springs and equipped with laces and hooks, together with about a pound of special spring grease. Just clean the springs, spread grease on thickly, and lace on covers. Springs will need no further attention for a year. Directions furnished.

**F6645**—Set of 4 Spring Covers for all Model A Fords **1.69**

### Motorlever Extension Brake Handle

A simple extension handle that attaches to the emergency brake lever. Made of heavy-gauge chromium-plated sheet steel. The grip is of smooth black bakelite. It is good for years of service. Brings the emergency within easy reach. No more fumbling underneath the dash; no more leaning forward. The eyes never have to leave the road. Just a slight pressure and the brake is released. Easy to install, cannot rattle.

**B5372**—Brake Lever Extension. . . . .**1.61**

### Folding Windshield Posts

All of the higher priced open cars and 1930 Fords come equipped with windshield posts, that fold down to gain a sport appearance. Cuts down wind resistance, increases speed. Made of highest quality brass, every part rust proof. Full polished chromium finish. Will not tarnish or need polishing. Drilled for windshield wings and curtain fasteners. Large wing nut for adjustment. Guaranteed a perfect fit. Can be installed by any one in about 30 minutes.

**D6078**—Fold-down Windshield Post, complete. . . . .**7.95**

### Grease Retainer

Keep the grease from working out of the rear axle, onto the brakes, making your car unsafe. The "Trautner" retainer has an asbestos packing ring that fits around the axle shaft, with a steel spring that keeps the asbestos ring tight regardless of wear.

**J7748**—Retainer for Model A passenger cars. . . . .**.85**  
**J7749**—Retainer for Model AA trucks, except late 1930. **.85**

2009: A5169, \$1.54 ea  
A5167, \$2.31 ea  
2010 Catalog: A5169, \$10.40

*In 1931, S.H. DeRoy and Co. advertised eyeglasses in white gold-filled frames for \$7.50, including the examination, and you could pay 50 cents a week. Dr. Finkelstein, who advertised "lady attendants," would pull your teeth for 50 cents each and make false teeth for \$10 a plate.*

2009: \$46.00  
2010 Catalog: Vinyl: \$169.00  
Canvas: \$209.00

2009: \$25.40  
2010 Catalog: \$67.50

2009: \$3.85  
2010 Catalog: \$3.20  
Pair—GREAT BUY!!

**An important thing to remember: In 1930-1931, the Model A Ford was very much a 'modern' car (not an 'antique' as it is today!)**



# VINTAGE



....Frankie Dunevent

# IS IONS S

## BUTTONS

There is one accessory that has been a necessity in every home for generations and that is the button. It has been used for fastening as well as trimming.

Some dresses in 1930 had rows of tiny buttons on narrow mid-front panels that went from the neckline nearly to the hemline. Dresses with bodices in double-breasted style had four buttons, two for closing and two for trimming. Vestees on "V" neckline frocks were often trimmed with a row of buttons down the center.

Another use for buttons was to put them on the outer side of deep cuffs or partway up the sleeve of a garment.

Some tuck in blouses with front closings were fastened with standard sized buttons. The long outer blouses often had very tiny ones from neckline to hemline.

Although skirts were usually fastened with a one-buttoned-band, some had several visible buttons vertically spaced on the opening.





# Gear UP For Touring!



Tech  
Corner

...Ken Nelson

Touring.... the thought either evokes great fear or great fun among Model A owners. The Model A was built to drive and has proven to be extraordinarily reliable for over 70 years. No, it won't take you down the road at 70 MPH comfortably in the hot August sun, but it WILL make you slow down and enjoy the back roads of this fine land. So, what do you need to go a-touring? Here are a few things to consider.

## Lubrication

- First, change your oil. Every 500 miles at least, and if you don't use your A much, every 6 months, since condensation can build up in the crankcase and contaminate your oil.
- Check the differential and transmission lube, use 600W lubricant if needed.
- Grease the chassis and running gear. Don't forget the Universal joint and occasionally hit the throw out bearing hub underneath the floorboard. Another often forgotten lube point is the rear wheel bearing. The fitting for this can be found underneath the rear axle housing where the brake backing plate connects to the casting.
- Oil the distributor and generator with a couple of drops of light weight oil.
- Grease the water pump, but be careful greasing the end toward the engine since over doing it can lead to a stopped up radiator.

## Engine Compartment

- Clean and re-gap the plugs... look for oily or sooty plugs to give you hints on what the engine is doing.
- Clean the plug wires.
- Check the point gap. As the points wear the clearance tends to get tight, and this can cause some overheating.
- Check the "air gap" between the rotor and cap contact points. They should be .025.

## Under the Floorboard

- Take the time to lift the front floorboard and look at the battery connections. Pay particular attention to any corrosion that you might see. NAPA auto parts has two products that will help. The first neutralizes and dissolves the white crud that forms on the post. The second is a protective spray that coats the connection. Check the water level in the battery and fill with distilled water or rainwater if needed.
- While you're in the area, you might want to check the free travel on your clutch. The correct amount is 1 inch of free travel before you feel resistance.

## Tires

- Check for the correct pressure in your tires (35-PSI)... don't forget your spare. Make sure that all the lug nuts are TIGHT. The driver's rear and Passenger's front tend to loosen up. Look for any abnormal wear or obvious defects.

## Radiator

- Check the water level and fill if needed. It is normal for the water level to be below the baffle plate in the neck of the radiator. Run a finger inside the neck, and see how much grease has build up.

## Supplies (bare minimum in the trunk)

- 1 gallon jug of water and 1 quart. of oil.

## And—

*Don't forget to let the tour leader know your cell phone number. It may be a good idea to have the cell phone numbers of "several" members on the tour so you can keep in touch if there is a problem. If you have a CB, be sure to bring it and have it "tuned" in.*





## MEET THE SHADE TREE A'S NEWSLETTER SPONSORS!

Our thanks to the folks below whose generosity supports our newsletter. Please remember them when you need a service they offer, and don't forget to tell them you appreciate their support of our club!

**Need HELP !..with your restoration project?**




For nearly 50 years, car owners have trusted LeBaron Bonney to provide first quality kits and parts for their restoration projects. We know cars and we know that product fit is critical to your antique restoration. We offer interiors, seats, and accessories for Model A and other Ford vehicles (1928-1962). Contact us today for a FREE literature package for your model and a FREE copy of our latest Parts & Accessories Catalog. Your car will be happier for it!

**1-800-221-5408**  
www.lebaronbonney.com


Over 100,000 Kits Sold

UPHOLSTERY KITS • PANEL SETS • CARPETS • TOPS • FABRICS  
TOP ASSEMBLIES • HEADLINERS • PARTS & ACCESSORIES


**LeBARON BONNEY**  
*Company*



**Mike's "A" Ford-Able Parts**  
Specializing in Model "A" Ford Parts 1928-1931



**MIKE BUTCHER**



Have an "A" Day!

124 Model A Drive  
Maysville, GA 30558

706-652-3866  
Fax 706-652-2452  
888-879-6453

E-Mail: [mike@mikes-afordable.com](mailto:mike@mikes-afordable.com)  
Shop on the WEB at: [www.mikes-afordable.com](http://www.mikes-afordable.com)



Drive Through Time With Peace of Mind

Insure with  
**J.C. Taylor**  
Antique Automobile Insurance Agency  
1-888-ANTIQU (1-888-265-4783)  
www.jctaylor.com

**SUSAN MELOAN**



JACKETS, SHIRTS AND VESTS  
For Shade Tree A's Club Members.  
Digitally Controlled Machine Embroidery Services  
803-441-0097 Susanmeloan@comcast.net

**Jim McPherson** 706-592-4835



**MODEL A MASTERS, INC.**  
Specializing in hard to find original parts!

**Joseph E. Spires**  
ATTORNEY-AT-LAW  
ADMITTED IN GEORGIA

**WARD AND SPIRES**  
A PROFESSIONAL SERVICE, L.L.C.  
445 Walker Street  
Augusta, Georgia 30901

Phone (706) 724-2640  
Fax (706) 724-2642  
E-mail: [wardspires@aol.com](mailto:wardspires@aol.com)

FLAT HEAD FORD REBABBITTING  
PRECISION LINE BORING  
MODEL T, A, B, V8 FORDS  
OUR SPECIALTY



ENGINE REBUILDING

**Schwalm's**  
BABBITTED BEARINGS  
MODEL "A" ENGINE REBUILDING  
ORA LANDIS (717) 687-6976

**GoldCross** Emergency Medical Services, Inc.



1109 Medical Center Drive, Building 4  
Augusta, Georgia 30919

Phone: 706-792-9292  
Fax: 706-792-9250



**Furniture Doctor, Inc.**

SALES/SUPPLIES 3323 Peach Orchard Road  
Augusta, Georgia 30906  
(706) 798-5951 www.furnituredoctor.net

REFINISHING/RESTORATION 3345 Peach Orchard Road  
Augusta, Georgia 30906  
(706) 793-0716



**MOOG Signs**

**706-722-8470**

**RUSSELL TRAPP, SR.**  
333 East Boundary Augusta, Ga. 30901  
Fax 706-724-4055  
[russell@moogsignt.com](mailto:russell@moogsignt.com)



# Down The Road....

## SHADE TREE A'S EVENT SCHEDULE

### MAY

- 1 Parrot Picnic
- 10 STA Meeting
- 13-16 Social Security Run
- 22 Tech Session 25 (Note date change)
- 29 Aiken Memorial Day Parade



### JUNE

- 5 Doctors Hospital Event, Warren Baptist Ch.
- 7 STA Meeting (Note date change)
- 19 Trenton Peach Parade/Pool Party
- 26 Tech Session 26

### JULY

- 3 Gilbert Peach Festival (Note date change)
- 12 STA Meeting

### AUGUST

- 19 STA Dinner Meeting (Note date change)

### SEPTEMBER

- 13 STA Meeting
- 18 International Model A Day/Celebrate Aiken! Transportation Parade
- 24-25 Palmetto A's Swap Meet

### OCTOBER

- 2 Oliver Hardy Parade, Harlem, GA
- 11 STA Meeting
- 16 Steak Cookout
- 23 Tech Session 27

### NOVEMBER

- 6 Richland Creek Farm Days
- 8 STA Meeting

### DECEMBER

- 13 STA Meeting

A RED entry denotes a change or an addition to these calendars.

## OTHER EVENTS OF INTEREST

(Non-club events but members are encouraged to participate)

### June

- 14-18 MARC National Meet, French Lick, IN
- 19-27 MAFCA 150th Anniversary Pony Express Model A Tour



### July

- 2-4 Old Maggie Valley Swap Meet, Fletcher, NC

### August

- 1-6 MAFCA International Convention, Vancouver, British Columbia, Canada
- 7-14 Post-Convention Alaska Cruise
- 26-29 Charlotte AutoFair



### September

- 18 Penny Pinson Hot Dog Day



### October

- 7-10 Hershey Swap Meet

### November

- 19-20 Moultrie Swap Meet

## REFRESHMENTS

Name underlined coordinates what the group brings

### May

Nelson, Richardson, Neitzke, Krosting

### June

Mike Gordon, Alan Stewart, Adams, Chavis



# Happy Birthday!



- |                    |                       |
|--------------------|-----------------------|
| Don Gordon         | 20 - Gerald Melchiors |
| Robyn Broome       | 21 - Billy Garland    |
| 5 - Montie Knapp   | 23 - Ken Nelson       |
| 7 - Jim Dover      | 24 - Linda Krosting   |
| 8 - Lois Melchiors | 28 - Betty Wade       |
| 15 - Russell Young | 28 - Ben Deitz        |
| 18 - Dotti Shogren | 29 - Joe Christian    |
| 19 - Brenda Prince |                       |

